

# QUEENS PARK SCHOOLS



## QUEENS PARK SCHOOLS *Prospectus*



# Contents

## 1. THE SCHOOL

- 1.1. Who are we?
- 1.2. Our Vision
- 1.3. Our Mission
- 1.4. Our Model
- 1.5. Our Ethos
- 1.6. Learner's Pledge
- 1.7. School Song
- 1.8. What we offer

## 2. MESSAGE FROM THE PRINCIPAL

## 3. OUR CURRICULUM

- 3.1. Pre-primary
- 3.2. Foundation phase
- 3.3. Intermediate phase
- 3.4. Senior phase
- 3.5. FET Phase
- 3.6. After Care
- 3.7. Coding and Robotics
- 3.8. E-Learning
- 3.9. Assessment
- 3.10. Our House System and the teams
- 3.11. Extra-Mural Activities

## 4. OUR PREMISES

## 5. NEXT STEPS

- 6.1. School Fees
  - 6.2. School Uniform
  - 6.3. Errors and Omissions
- ## 6. FREQUENTLY ASKED QUESTIONS

## 7. GALLERY

# About Us

## 1.1 WHO ARE WE?

Queens Park Schools–Roodepoort is a mixed private school offering affordable, quality education. Prompted by the state of South African Education and committed to establishing an effective education system that will promote the holistic academic needs of its learners. The South African couple that co-founded Queens Park Schools believed that Roodepoort CBD and the surroundings area's parents and children deserve access to excellent education at an affordable fee hence, they dedicated themselves to creating a new model that would provide access to quality education for all.

## 1.2 OUR VISION

Our vision is to be a school of choice by providing value-based and high-quality affordable education.

## 1.3 OUR MISSION

Our mission is to produce children who can think critically, find solutions to challenges, succeed in life and help them adapt to the demands of our changing world. In order to attain this vision and mission, QPS strives to provide as many opportunities as possible:

- Maintain small class sizes and give individual attention to children
- Invest in committed and qualified educators
- Recognize and develop individual potential
- Offer a curriculum that incorporates personal and studious growth
- Be supportive, caring and encouraging
- Keep abreast of the latest technology
- Promote team work among learners
- Nurture talents among learners
- Teach traditional values, respect, positive discipline and courtesy in our modern world.

## 1.4 OUR MODEL

Our model is a contemporary approach that is holistically integrated based on each learner's individual needs, interest and potential. This model offers a value-based education that produces learners who can think critically, find solutions to challenges and succeed in life. Our ethos secures consistently high performance among both students and teachers. Our model extends beyond the confines of traditional academia to tuition in life and communication skills, equipping children to meet all of life's challenges.



# About Us

## 1.5 OUR ETHOS

### STAFF AND SCHOOL

- We are passionate and compassionate about helping our children succeed
- We live by honesty and integrity.
- We take individual responsibility and accountability.
- We care for and respect each other.
- We foster personal growth.
- We support and participate in the community.
- We reward innovation and nurture leadership and vision.

### LEARNERS

- Resiliency
- Collaboration
- Acceptance
- Honesty
- Humility

## 1.6 LEARNERS PLEDGE

*To our dear Queens Park Schools, I pledge to be royal and true.  
I promise to keep the rules in the classrooms,  
at school, on the play field, and along the roadways, where I roam.  
I will respect myself, my parents my teachers and others  
I will expect the best in all I do  
To try my best and be all I am End*



## 1.7 SCHOOL SONG

*To Queens Park Schools, our School.  
The name that we sing with pride.  
Wearing school colours gives us joy and pride,  
To our founders we give full praise.  
To our dear school we will be royal and true.  
Keep the rules in the classrooms, at school, on  
the play field, and along the roadways where we roam, all everyday throughout the year.  
Yes, we promise to stand strong and tall, with each other united in love for our parents and  
teachers respect we will share.  
And to the world we will give our best.  
Queens Park Schools a "great place for education" we firmly strive  
God bless Queens Park Schools our school, our home  
He will be our strength and guide us all the way  
God bless Queens Park Schools our school, our home  
End*

# About Us

## 1.8 WHAT WE OFFER

We offer all the basic requirements of the official curriculum:

Pre-primary – 3 years to 5 years

Foundation phase – Grade R to 3

Intermediate phase – Grade 4 to 6

Senior phase – Grade 7 to 9

FET Phase – Grade 10 to 12

In Addition to the standard Curriculum QPS also offers:

- Computer Classes
- Swimming Lessons
- Sports and Recreation
- Creative and Performing arts

We believe that these additional programs play a vital role in the cognitive, creative and social development of every child that attends our school.



# Message from the Principal



## *Welcome to Queens Park Schools*

### **Mrs. Jane Louise Wenhold(Acting)**

We understand the importance of choosing the right school for your child. So, we have every intention to make the educational journey for your child and you as rewarding as possible. I want to assure our parents that your children will leave Queens Park School as confident, self-assured and disciplined individuals, well-equipped with the ability to think critically, find solutions to challenges and succeed in life as well as help them adapt to the demands of the changing world. Queens Park School is a safe environment for learning and it offers a range of activities, a solid commitment to excellence in the classroom, both culturally and on the sports field.

We maintain small class sizes and give individual attention to every child. Our classrooms are vibrant student-centred environments where inquiry-based approaches are balanced with direct teaching methods. Our teachers actively strive to encourage children's natural curiosity and love of learning. They take incredible care to support each child's social and emotional development.

We also know how important it is to build strong parent-teacher relationships as we recognize what a pivotal role a teacher plays in a child's life. As a result, we encourage parents to be active participants in school life and we welcome you to be part of our many family events and class activities.

Our vision is to be the school of choice by providing a value-based and high-quality affordable education. Once again, thank you for your interest in our school and we look forward to you and your family becoming part of our school community and I welcome you to join us and visit our school.

Please contact the school to arrange a tour or for an enrolment pack to be sent to you.

# Our Curriculum

## 3.1. PRESCHOOL



### AGE 3 YEARS – 5 YEARS

Our Preschool curriculum encourages children to be mentally inquisitive and to take responsibility and initiative as they move into this more structured phase of their life.

Our Preschool curriculum:

- Personal, Social and Emotional Development
- Communication and Language
- Mathematical Development
- Physical Development
- Expressive Arts and Design
- Literacy Development

## 3.2. FOUNDATION PHASE



### GRADE RR - GRADE 3

Our Foundation Phase curriculum promotes four aspects of achievement:

- The ability to express in oral and written form.
- The ability to apply knowledge through practical tasks and in problem-solving skills.
- The development of personal and social skills.
- The development of self-confidence.

Each student from Grade 1 will be required to own a personal iPad.

Our major subjects and areas of learning are as follows:

- Languages
- Mathematics
- Life Skills

# Our Curriculum

## 3.3. INTERMEDIATE PHASE



### GRADE 4 - GRADE 6

Our Intermediate Phase curriculum encourage investigating, modelling and designing solutions, engaging our learners in science, collaboration and presentation skills, critical thinking and problem-solving. Each student will be required to own a personal iPad.

Our major subjects and areas of learning are as follows:

- English (Home Language)
- Afrikaans (First Additional Language)
- Mathematics
- Natural Science and Technology
- Social Sciences (History and Geography)
- Life Skills – which includes Creative Arts

## 3.4. SENIOR PHASE



### GRADE 7 - GRADE 9

In our Senior Phase learners have to decide on subject choices, career direction when they finish school after Grade 9 (the last compulsory year of schooling). This means they must make very important decisions that will impact not only on what subjects they take in Grades 10 to 12, but also on their working life after school. In this phase the same literacy principles as in previous phases are included in the home language teaching, with a bigger emphasis on language and mathematics allowing for a more focused problem-solving approach. Each student will be required to own a personal iPad. Our major subjects and areas of learning are as follows:

- English (Home Language)
- Afrikaans or isiZulu (First Additional Language)
- Mathematics
- Economic and Management Sciences (EMS)
- Natural Science
- Social Sciences (History and Geography)
- Life Orientation – which includes Physical Education
- Technology
- Creative Arts (Music, Art and Drama)



# Our Curriculum

## 3.5. FET PHASE



### GRADE 10 - GRADE 12

Queens Park Schools provide a grounded educational programme. We offer all 12 subjects learning areas of the Curriculum and Assessment Policy Statement (CAPS). Under FET phase (Grade 10–12) learners can choose from a wide range of subjects as per the National Curriculum provided by the Department of Education (DoE). Queens Park Schools is also in preparation to be affiliated with the Independent Examination Board (IEB). This will give an optional opportunity to matriculates writing the IEB National Senior Certificate Examination. Each student will be required to own a personal iPad.

Our major subjects and areas of learning are as follows:

- English (Home Language)
- Afrikaans (First Additional Language)
- IsiZulu (First Additional Language)
- Mathematics
- Mathematics Literacy
- Accounting
- CAT
- Economics
- Business Studies
- Life Science
- Physical Science
- Geography
- Tourism
- History

# Our Curriculum

## 3.6. AFTERCARE



The After-School Care Centre only operates during school terms. The centre is open from 15h30 to 18h00 on school days (Excluding the last day of the term)

### Activities

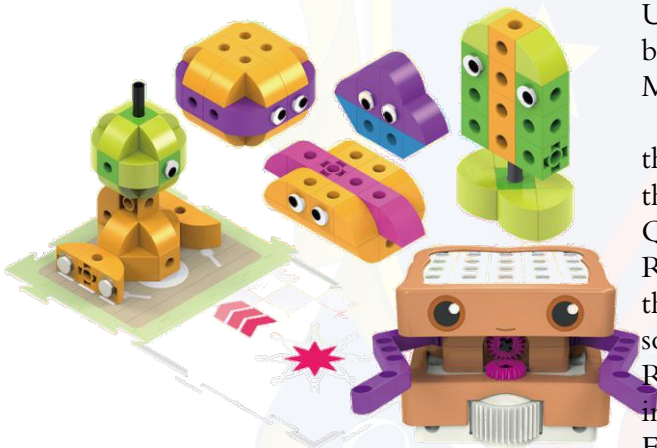
- Homework for Grade 1 - 7 will be encouraged and supervised, but the onus still remains on the parents to see that all homework is completed.
- As a safety precaution, children attending after-care are required to remain within set boundaries at all times. Children will be clearly informed as to where these boundaries are. Here the children are placed under the watchful eyes of the After-School Centre staff. They are allowed to play under supervision.

### Arrangements

- Children must be fetched by 17:30 – an additional fee of R50-00 will be charged for late pick-ups. Any child collected after 18:00 will have to be fetched at the home address of one of the supervisors. Children may, however, be fetched any time during the afternoon.
- When collecting your child, please allow him/her a few minutes to pack away whatever he/she is busy with. Please ensure that your child says goodbye to both supervisors.
- Should anyone other than the parent or guardian be fetching your child, please notify the supervisors by note, telephone or SMS. Please note that if no such notification has been received, the child concerned will not be released from our care.
- If your child will not be attending the Centre for any particular reason (e.g. dentist appointment, going to play with a friend, etc.) please notify the supervisors. The supervisors will not be held responsible for any child who fails to report to After Care.
- A snack or sandwich, cool drink and an occasional treat will be provided. Children may bring extra food or fruit if required.

# Our Curriculum

## 3.7 CODING AND ROBOTICS



Referencing research by the University of Oxford, and UNESCO, which predict that up to 60% of jobs today will be non-existent in the next decade or two, the Management of Queens Park Schools stressed

that the need to introduce digital subjects is "responsive to the demands of the changing world." Which is in line with QPS vision statement.

Robotics is no longer seen as the reserve of a quite few that are "into it", but is now a way for young problem solvers to get involved in a rapidly expanding field.

Robotics and automation are changing the world of work in ways never before imagined and the skills learned in the Future Focus Centre may well change the career paths of many young QPSs.

The robotics curriculum has a strong foundation in science, technology, engineering and mathematics (STEM), and learners will be able to build and operate robots using programming code.

## 3.8 LEARNING

The ongoing effects of the virus has kept pupils and teachers at home across the country. This has necessitated QPS's early move to e-learning. This could be an important step towards an open-minded and a quality education at QPS. Digital platforms will enable equitable access for our learners to digital books, simulated science labs and related, innovative learning resources.

Electronic and mobile learning can thus be seen as an additional learning resource that can also help enhance access to learning tools. Parents are expected to buy electronic and mobile learning gadgets for their learners.

Learning will take place via various platforms including D6, YouTube and Snapplify, and electronic and mobile learning gadgets.

## 3.9 ASSESSMENT

There are no examinations in Foundation Phase. The following rating scale to be used is for all other phases:

CODE	DESCRIPTION OF COMPETENCIES	%
7	Outstanding achievement	80–100%
6	Meritorious achievement	70–79%
5	Substantial achievement	60–69%
4	Adequate achievement	50–59%
3	Moderate achievement	40–49%
2	Elementary achievement	30–39%
1	Not achieved	0–29%

# Our Curriculum

- There are no formal assessments for Grade R.
- Assessment Tasks are marked and formally recorded by the teacher for progression and certification purposes. Teachers will record actual marks against the task by using a record sheet; and report percentages against the subject on the learners' report cards.
- The year mark counts for 75% of the final mark and the end of year exam counts for 25%.



The Queens Park Schools House system gives a real sense of belonging, and it allows students to develop important personal relationships. The House system creates competition, promotes hard work and good behaviour, encourages teamwork, provides opportunities to take on new responsibilities and brings everyone in the school together.

Our 4 houses are the names of well-known South African Politicians and Human Rights Activists, which are:

**Luthuli House (Green):** Named after Chief Albert John Mvumbi Luthuli, who was a South African teacher, activist, Nobel Peace Prize winner, and politician. Luthuli was elected president of the African National Congress (ANC) in 1952.

Born: 1898, Bulawayo, Zimbabwe and Died: 21 July 1967, KwaDukuza

Slogan: *Best in the field and defend till the end.*

**Tambo House (Blue):** Named after Oliver Reginald Kaizana Tambo also known as O. R. Tambo, who was a South African anti-apartheid politician and revolutionary who served as President of the African National Congress (ANC) from 1967 to 1991. He was also a teacher and a lawyer by trade. Born: 27 October 1917, Nkantolo Died: 24 April 1993, Johannesburg

Slogan: *Losers complain but champions train.*

**Mandela House (Yellow):** Named after Nelson Rolihlahla Mandela, who was a South African anti-apartheid revolutionary, political leader and philanthropist who served as President of South Africa from 1994 to 1999. He was the country's first black head of state and the first to be elected in a fully representative democratic election. He was also a lawyer. Born: 18 July 1918, Mvezo Died: 5 December 2013, Houghton Estate, Johannesburg.

Slogan: *A winner is a dreamer who never gives up*

**Mbeki House (Red):** Named after Thabo Mvuyelwa Mbeki, who is a South African politician and served as the second president of South Africa from 16 June 1999 to 24 September 2008. Born: 18 June 1942 (age 78 years), Mbewuleni, eSigangeni

Slogan: *One team, one dream.*

# Our Curriculum

All students are allocated to Houses when they first join Queens Park Schools and siblings are always placed in the same House. There are weekly House meetings led by the student heads of House and a number of interhouse competitions take place throughout the year in which all students are encouraged to participate.

Each house comprises of one House Patron who is a member of teaching staff, a boy and girl House Captains and two Vice-Captains who are nominated each year by teachers of each house. The House Patron, Captains and Vice-Captains guide their teams on all fronts and play a vital role in leading their team to victory in all events. Students are awarded house points in the following 5 areas:

- Queens Park Values
- South African values
- Academic Activities
- Sport Activities
- Attendance

We recognise and celebrate student's achievement through awarding house points. Each time a student is awarded a house point, they are given a token of the colour of their house, which is then dropped into the house point counter located in the accounts office, which in turn is then logged into our system.

Throughout each term there are various activities and competitions students can join in to earn more points for their house. We celebrate our achievements on the last Friday of each term, whereby students and staff attend their own house assembly. Certificates and awards are presented by the house leaders and the winner's trophy goes to the house with the overall winning house points.

## 3.11 EXTRA-MURAL ACTIVITIES

Extra-mural activities are activities which fall outside the scope of our regular curriculum. We offer these activities to improve our learner's academic performance. They also give our learners something fun to do aside from school and the chance to explore their passions which will lead them to discover things they may be interested in beyond academics.

In addition to the standard curriculum, QPS also offers:

- Computer Classes
- Swimming Lessons
- Sports and Recreation
- Creative and Performing Arts
- Chess Lessons



### 3.11.1 SWIMMING CLASSES

At QPS we realise the importance of teaching children how to swim at an early age. Since child safety is one of our top priorities, we teach our kids how to be safe around water. We encourage our students to swim regularly as a significant benefit to their health. Swimming also encourages a healthy level of physical and social activity and provides a more effective workout than most other activities. We offer these classes at no additional cost.

# Our Curriculum

## 3.11.2 CREATIVE AND PERFORMING ARTS

Our learners participate in creative and performing arts as a way to help them feel comfortable in their own skin, improving their self-belief and confidence as they continue to improve over time. Our dance class also improves their listening, discipline, perseverance and learning skills.

Their talents are showcased at our annual QPS Talent Show, where parents and the general public are invited to watch. Participating in these talent shows gives our learners recognition for non-academic talents. It's a wonderful team building experience for all ages. These classes are also offered at no additional cost.



## 3.11.3 BALLET

Ballet helps develop motor skills, co-ordination and boosts concentration. It promotes strength and agility taught in a beautiful safe environment, it will allow your children to build friendships and foster positive teamwork. Queens Parks Schools has partnered with a well-qualified ballet instructor to come and instruct our learners. It's never too late for your children to realize their full potential. Parents will be expected to cover the training costs for their learners

## 3.11.4 COMPUTER CLASSES



Our computer classes prepare our learners for the skills they need to engage in technology both safely and responsibly. We also teach computers to empower and educate our learners by providing them with the tools they need to thrive in an ever-changing digital world. Becoming computer literate means that our learners develop technological skills at an early age and improves their lifelong learning. The future success of our QPS students depends on them becoming digitally literate.

When combining digital and traditional literacies, not only do students learn how to read and write, but they also learn how to expand their communication, language and media skills. They grow and engage with the world through images, diagrams, audio and visual media, taking their reading and writing skills to a higher level of learning.

## 3.11.4 CHESS LESSONS

Chess is offered to our high school students as a way to improve our learners IQ and teach them cognitive skills. Other benefits of playing chess are increased problem-solving abilities, concentration and memory skills. Research conducted also shows that Chess exercises both the left and right sides of the brain.



# Our Premises

At QPS we understand that there are a number of strategic benefits to a clean school. A clean school creates a positive learning experience and contributes to the ethos and culture of the school as a whole.

At QPS we encourage good hygiene practices, promote a positive image to the community which reassures our pupils' safety. We also teach our pupils and staff to respect our property and environment which reduces hidden costs associated with deterioration of property and expenditure on maintenance.

In addition to the indirect impact cleaning staff has on the learning experience of pupils, maintaining a good standard of housekeeping at our school will also ensure a safe and hygienic environment for all users of the building, including pupils, staff and visitors.



# Next Step

In order to attend QPS payment of school fees is compulsory.

- For new applicants and returning learners, a non-refundable registration and administration fee is applicable.
- This registration and administration fee secures a student's place and covers all the administrative costs with regards to admission at QPS (these are not refundable).
- Applications will not be processed until the full registration and administration fee has been received by the school.
- Parents should expect school fees to increase by a cost of living adjustment on an annual basis in line with inflation.
- We do offer discounts for a second family member as well as discounts on fees paid in full before schooling starts. We do not offer bursaries.
- School fees does not include costs for uniforms, stationery, textbooks, educational outings, field trips and co-curriculum activities that require payments.

Fee (Once Off)	Registration & Administration	E-Learning Textbooks & Library
New Learners	R2 500	GR RR-R : R 500 , GR 1 - 3 : R1000
Old Learners	R2 000	GR 4-6 : R1 500

**NOTE: GR 7-12 Must buy there own test books.  
Request for the list of acceptable text books**

	<i>Early Bird 5% Discounted Annual</i>	<i>2.5% Discounted Annual</i>	<i>1.5% Discounted on termly Payment</i>		
	<i>Annual Fees (Excluding Discounts)</i>	<i>Only if paid in advance before 3rd January 2023 by EFT</i>	<i>Only if paid in advance before 2nd February 2023 by EFT</i>	<i>Payment must be paid at the beginning of each term</i>	<i>Païd monthly over 11 months (Excluding discounts). Payable on the 1st of every month and must be cleared by 15 November 2023</i>
Grade RR-R	16,560	15,732	16,146	4,078	1,505
Grade 1-3	17,760	16,872	17,316	4,373	1,615
Grade 4-6	18,960	18,012	18,486	4,669	1,724
Grade 7	19,560	18,582	19,071	4,817	1,778
Grade 8-9	21,360	20,292	20,826	5,260	1,942
Grade 10-11	22,200	21,090	21,645	5,467	2,018
Grade 12	24,000	22,800	23,400	5,910	2,182
Aftercare	8,400				764

**NB: For the 2.5% annual deposit to apply, the parent consistently continues to pay his / her monthly payments. The discount will fall away in case of a payment default.**

## Extramural Activities

Swimming Cost Per Term R450 using our school pool. Ballet is Free, Music and School Band is Free, Art and Drama is free and All other extral mural activities

*If you require further information on payments or the enrolment process, please contact our wonderful Admissions team, directly, through [accounts@queensparkschools.co.za](mailto:accounts@queensparkschools.co.za).*



## 5.2 School Uniform

QPS students have a uniform that is practical and gives them a sense of identity and belonging. (Dates for change will be announced in the weekly newsletter)

<b>Boys' Summer</b>	<ul style="list-style-type: none"> <li>Grade R-7, Grey short, grey socks, white short-sleeved shirt with school badge, V-neck pullover or jersey, a tie and a blazer.</li> <li>Grade 8-11, Grey trouser, grey socks, white short-sleeved shirt with school badge, V-neck pullover or jersey, a tie and blazer.</li> </ul>
<b>Boys' Winter</b>	<ul style="list-style-type: none"> <li>Grade R-7, Long grey trouser, grey socks, white long-sleeved shirt with school badge, tie, jersey, blazer or with school winter fleece-lined bomber jacket and/or a tracksuit.</li> <li>Grade 8-11, Grey trouser, grey socks, white long-sleeved shirt with school badge, tie, jersey, blazer or with school winter fleece-lined bomber jacket and/or a tracksuit.</li> </ul>
<b>Girls' Summer</b>	<ul style="list-style-type: none"> <li>Grade R, Tunic with white collar and short sleeved, white ankle socks.</li> <li>Grade 1-7, V-shaped, short-sleeved tunic, short-sleeved open necked white blouse or shirt with a school badge and white ankle socks.</li> <li>Grade R-7, Short skirt</li> <li>Grade 8-11, Tunic skirt above the knee, short-sleeved V-necked white blouse or shirt with a school badge, tie and white ankle socks.</li> </ul>
<b>Girls' Winter</b>	<ul style="list-style-type: none"> <li>Grade R-7, V-shaped short sleeved tunic, long-sleeved white shirt with a school badge, grey socks, navy-blue, black woolen tights, pullover or jersey and blazer or winter fleece-lined bomber jacket. A pair of trousers to be worn as part of the girls' winter uniform in place of the girl's tunic in extreme cold weather.</li> <li>Grade 8-11, Tunic skirt, long-sleeved white shirt with a school badge, white socks, navy-blue, black woolen tights, pullover or jersey and blazer or winter fleece-lined bomber jacket. A pair of trousers to be worn as part of the girls' winter uniform in place of the girl's tunic in extreme cold weather.</li> </ul>
<b>Shoes</b>	<ul style="list-style-type: none"> <li>Both Boys and Girls: a pair of black lace-up shoes or bar shoes.</li> </ul>
<b>Physical Ed.:</b>	<ul style="list-style-type: none"> <li>House T-shirts (Blue, White, Red, Yellow, Black) are worn with blue boxer shorts.</li> </ul>
<b>Netball Matches:</b>	<ul style="list-style-type: none"> <li>Red Valencia netball top and skirt and white takkies.</li> </ul>
<b>Cricket:</b>	<ul style="list-style-type: none"> <li>Blue short- or long-sleeved shirts, trousers, white takkies, blue cap or white cricket hat.</li> </ul>

## 5.2 School Uniform

QPS students have a uniform that is practical and gives them a sense of identity and belonging. (Dates for change will be announced in the weekly newsletter)

<b>Tennis Matches:</b>	<ul style="list-style-type: none"> <li>• Pleated tennis skirt with white and yellow strips or blue sport shorts, white socks and takkies.</li> </ul>
<b>Hockey Matches:</b>	<ul style="list-style-type: none"> <li>• Girls: (home games) V-shaped navy-blue shirt with white and mastered strips with navy-blue shorts, white socks, white or black takkies.</li> <li>Girls: (away games) V-shaped white shirt with blue and mastered strips and navy-blue short, white stocks, white or black takkies.</li> <li>Boys: (home games) V-shaped white shirt with blue and mastered strips and navy-blue short, white stocks, white or black takkies.</li> <li>• Boys: (away games) V-shaped navy-blue shirt with white and mastered strips and navy-blue shorts, white stocks, white or black takkies.</li> </ul>
<b>Athletics Meetings:</b>	<ul style="list-style-type: none"> <li>• Both Boys and Girls: Golf shirts and blue sport shorts with badges, white socks and takkies.</li> </ul>
<b>Girls' Winter</b>	<ul style="list-style-type: none"> <li>• Both Boys and Girls: House T-shirts and blue sport shorts with badges</li> <li>• white socks and takkies.</li> </ul>
<b>Soccer Matches</b>	<ul style="list-style-type: none"> <li>• School blue shorts, white sport shirt (with badge), soccer socks, shin pads soccer boots or tekkies.</li> </ul>
<b>Swimming</b>	<ul style="list-style-type: none"> <li>• School costume and school cap, swimming T-shirt (optional).</li> <li>Boys: "Jammers" plain blue and/or plain blue speedo.</li> <li>Girls: The girls' swimming costume is plain blue. Girls may also</li> <li>• choose to wear the boy's "jammers" in addition to their full costume.</li> </ul>

*\*NB Please request for the prices for our school uniform*

## 5.3 Errors and Omissions

The school reserves the right to review and correct errors and to make amendments to the terms herein, during the year, without notice. Such revisions shall be communicated to parents in writing or electronically.

## 6.0 Frequently Asked Questions

*1. Is the school registered with the Gauteng Department of Education?*

Yes, our registration number is 700400606.

*2. Does the school have multiple branches and is it affiliated with any international schools?*

No. The school does not have other branches and it is not affiliated with any international school.

*3. Is the school for Girls only since it's called Queens?*

No. Queens Park Schools is a mixed private school for both girls and boys from Grade RR to 12.

*4. Is Queens Park a new School?*

No Queens Park is not a new school. The school has existed since 2013, operating in the Johannesburg CBD which was not conducive for quality education. In 2019, the school received new funding and was rebranded to Queens Park Schools and relocated to Roodepoort.

*5. Why choose Queens Park Schools?*

Queens Park Schools prepares students for the real world; our model is a contemporary approach that is holistically integrated and based upon each learner's individual needs and interests. This model offers a value-based educational approach that produces children who think critically, find solutions to challenges and ultimately succeed. Our ethos secures consistent high performance among both learners and teachers. The model extends beyond the confines of traditional academia to broader tuition in life and other communication skills, equipping children to meet life's challenges in a global competitive world.

*6. How many learners do you take on in each classroom?*

We are trying to maintain our smaller class sizes. Our classes are sitting at about 25 learners per classroom.

*7. Where can I view the school uniform?*

The uniform is on display in reception at the school. We have a distinctive, attractive and practical uniform (go to [www.queensparkschool.co.za/uniform](http://www.queensparkschool.co.za/uniform)). In order to minimise costs to parents, the school does not buy the uniforms and resell them. ***Rather, the orders are placed with the school which passes them on to the tailor. Parents pay the tailor directly.***

\*NB Uniform fees are not refundable, even if the learner deregisters from the school, once the order has been placed.

*8. What documents are required for enrolment?*

Enrolment procedure:

To enrol your child at QPS, you will need to make an application to the school. This application will require some documentation, required for all parents, as well as additional documents if you are a foreign national.

Documentation requirements include:

- a. The child's unabridged birth certificate
- b. Immunization and vaccination cards/certificates
- c. A recent school report card for learners who have attended another school previously
- d. From Grades 2-and-up a transfer card from the child's current school should also be included
- e. Certified copies of both parents' or guardians' identity documents
- f. Proof of income (either a most recent pay slip OR 3 month's bank statements) and a proof of residence (utility bill).

Additional documentation required from foreign nationals living in South Africa are:

- a. A study visa for the child
- b. Temporary visa or permanent residency permit from the Department of Home Affairs
- c. Evidence that you have applied for permission to stay in South Africa.

## 6.0 Frequently Asked Questions

### *9. How do I know if my child is accepted?*

You will receive a confirmation e-mail of your child's acceptance when we receive the completed application form, all required documentation, the non-refundable application fee and first month's school fees. There is no formal application process or entrance testing, as enrolment is processed on a first-come, first-served basis.

### *10. How do I guarantee my child's acceptance?*

It is very important to understand that we accept learners on a first-come, first-served basis! Acceptance is based on receipt of the full application form, signed and initialled parent contract, all required documentation, and proof of payment of the non-refundable application and administration fee and first month's fee. Both fees must be paid in order to guarantee your child's acceptance, and no learner will be accepted if any of these items are outstanding. Please note that payment of the first month's fee, application and administration fee alone does not guarantee placement, if the process is not followed, or there is no space available in the preferred grade of the school.

### *11. How old must my child be to enroll at Queens Park Schools?*

For grade RR, the child must be three years old or turning four by 30th June in the year of admission. For grade R, the child must be four years old or turning five by 30th June in the year of admission. For grade 1, the child must be five years old or turning six by 30th June in the year of admission. For all other grade levels, the child must have completed the previous grade level.

### *12. Is there an application deadline?*

Applications for next year are always open during the entire year, but to be included for the next school year, we need to have received your completed full application form, signed and initialled parent contract, all required documentation, and proof of payment of the non-refundable application and administration fees and first month's fee. Both fees must be paid in order to guarantee your child's placement, and no learner will be accepted if any of these items are outstanding. This must happen by no later than 2 weeks before the school start date.

### *13. Do you provide school transport?*

No, we do not. However, there are several private school transports that offer these services. Transport is, however, provided for extra-mural activities using the QPS school buses.

### *14. When and how do I pay school fees?*

We have a number of payment plans and options – [click here](#) for full details.

All learners pay a non-refundable administration fee of R1000 and registration fee of R500 for new learners and R250 for last year's returning learners. Learners are expected to buy their own textbooks and stationery. They are also expected to cover cost for extra-mural activities such as swimming and ballet. The list is readily available on our website or at reception.

### *15. What does the Application and Administration Fee include?*

It covers the entire application process and school administration costs for the entire year, including an enrolment assessment tests where necessary, the results of which will all be shared with you.

### *16. Are textbooks included in school fees?*

No. Parents will have to pay for learning material. With our new e-learning system, we have integrated digital textbooks into our multifaceted learning environment, which includes readings, live sessions, group work, videos, podcasts and other interactive multimedia content.

## 6.0 Frequently Asked Questions

### *17. Do you offer a sibling discount?*

Yes – when two or more siblings are concurrently learning at Queens Park Schools, the YOUNGER siblings will receive a 5% discount on their school fees.

### *18. What happens if I fall behind on my fee payments?*

If you have not paid your monthly fees in full by the 7th of any particular month, your child will not be admitted to classes the following day. If you drop your child off under these circumstances, we will phone you to collect him or her. If you do not collect them, then they will not be admitted to class, but will have to sit and await at reception for your collection. If, at the end of any term, fees are in arrears, then reports will be held by the patron, in his/her professional capacity until settlement of the account. Accounts that are one month in arrears will be handed over for legal collection.

### *19. Are there additional costs on top of the school fees?*

No. However parents are expected to pay for some extra-mural activities. These can include swimming, ballet, etc. If the school organises different kinds of field trips, parents will be requested to pay for those fees and will be notified beforehand.

Parents will also be expected to cover the costs of an iPad, learner's material costs, etc.

### *20. Do you have financing options/bursaries?*

We currently don't offer any financing options or bursaries.

### *21. What is the policy on refundable deposits should my learner deregister?*

The student may cancel this contract within seven (7) days after registration. Refunds will be made within 60 days from the date of termination excluding registration, administration and library fees

A student, who withdraws after commencement of classes, is entitled to a full refund of all tuition paid in advance except the current fees due for that period or month.

A student will only be refunded a net amount after all accounts have been reconciled. A student cannot be refunded until the accounts are up-to-date. All refunds are payable to the guardian/sponsor except with written notification from the sponsor – the case of trust funds, banks or employers of guardians and learner's-will, funds are paid into the account of the named individual or firm. Refer to our refund policy and refund form for more information.

### *22. Can I pay by Debit Order?*

Not at the moment. Unfortunately, we found during our first year that, although some parents were exemplary in their handling of the Debit Orders, a majority did not provide funds for the transactions which ended up costing the company. For this reason, we do not offer Debit Order facilities. All payments are to be by EFT, cash or swipe card. However, we highly recommend EFT payments.

### *23. Can I get the school's banking details?*

#### SCHOOL FEES ONLY

Account Name: Queens Park Schools

Account No: 62800029557

Bank: FNB

Type: Cheque Account

Code: 254904

Branch: Cresta Mall

Ref: Learners' Intials+Surname+Grade

#### SCHOOL FEES ONLY

Account name: Queens Park Schools

Account No: 4098281496

Bank: ABSA

Account type: Cheque Account

Bank Code: 631205

Branch: Eastegate

Ref: Learners' Intials+Surname+Grade

**\*NB Please be consistent with the references throughout the year.**

## 6.0 Frequently Asked Questions

### *24. What are the office hours and working week?*

Gates closes at 7h30. All learners must be seated in their classrooms by 7h45. Any learner who enters the school gates after 7h30 will be deemed late and will be given a late card. Also, a learner will be given a demerit points for consistent lateness. Please refer to our merit and demerit learner's system and understand how it works.

We work from Monday to Saturday:

Monday to Friday; 7H00 to 16H00.

Aftercare; 15H30 to 18H00.

Saturday; 8H00 to 13H00.

We are closed on public holidays and Sunday

### *25. What is the Queens Park Schools year calendar?*

The school year is split into four terms, please click for the school calendar or alternatively ask the administrator at the reception for one to get the current year's dates. The calendar will include all the planned school activities.

### *26. Which curriculum does the school use?*

We use CAPS curriculum as per the Department of Education.

### *27. What is the Abacus Maths you do?*

Your child will first learn to use the Japanese abacus called a soroban. As soon as they understand how it works, they will then be taught to carry an image of the soroban in their heads (this is called anzan). As they progress from simple addition and subtraction through multiplication and division, they will practice with both a physical and a mental soroban.

Anzan results in the balanced development and co-operation of the child's left brain (logical) and their right brain (pictorial). The outcomes are truly amazing. To watch some of the South African children doing these sums, take a look at [https://www.youtube.com/watch?v=cx\\_dslUE0H4](https://www.youtube.com/watch?v=cx_dslUE0H4). Notice their fingers working the soroban in their heads.

### *28. Is the abacus on the stationery list the same one used for Abacus Maths?*

No. The one on the stationery list is a Russian abacus having 10 beads per wire and 10 wires. This is used to teach numeracy. The abacus used for Abacus Maths is a Japanese soroban. Each wire has beads 1 to 4, plus a 5 bead.

Abacus Maths books or starter kits must be purchased from the school separately.

### *Private Abacus Maths classes*

Learners from other schools may participate in small group classes for R500 per month. The classes are held between 14h30 and 15h00 hours on Mondays through Thursdays (subject to openings being available).

### *29. How can I check my child's academic progress?*

You can log onto Queens Park Schools Online after two weeks at any time to see the current academic performance of your child. In addition, you and your child will have a video call with their teacher every 2-4 weeks to discuss progress or alternatively set up an early morning or late afternoon meeting with the parent to discuss their academic progress. Furthermore, the teacher will include the learner's academic progress in their communication books and reports will be issued out at the end of every term.

### *30. How will my child be assessed?*

Formative assessments and preparatory examinations are tested on a monthly basis.

## 6.0 Frequently Asked Questions

### *31. Does Queens Park Schools offer support for children with learning difficulties?*

Yes. On a monthly basis our teachers identify struggling learners. The parent is notified and measures are put in place to assist the struggling learner through extra classes. The school also offers extra classes every Saturday at no cost. Learners from other school can also attend at a cost.

### *32. What support do I need to provide my child?*

Queens Park Schools asks that parents/guardians play a pivotal role as the ultimate custodians of their children's education. As learner's progress through their education they incrementally develop holistic skills such as responsibility, self-discipline and independence. Queens Park Schools believes in individuality, and that no one student or family is the same. Values differ from person to person and family to family. It is up to each individual parent to determine the exact nature of and degree of support they provide their child.

Yes, you should spend time improving your child's reading and spelling skills because these are difficult exercises to carry out on one's own – they need to read and spell out loud and be corrected where necessary. Abacus homework, however, is strictly not for parent participation. We believe that providing support to your teen is about being involved in, and encouraging their holistic development.

Queens Park Schools enables a variety of options to support parents/guardians' involvement, such as:

- Monthly calls that include the student, their parent/guardian and the student's dedicated Mentor
- Regular access to academic progression online
- Opportunities to attend meet-ups between students and school ceremonies
- Receive school newsletters every month to give insight into what has been happening at school. You can also place an advert in our monthly school newsletters at an affordable fee
- Access to speak with their child's dedicated Mentor
- Ensure their learners do their homework, sleep early, pack healthy food and dress neatly every day.

### *33. Is Queens Park Schools a safe and inclusive environment for children?*

Queens Park Schools is strongly committed to offering an inclusive learning experience for any and all of our students. We want to celebrate their uniqueness and individuality, and our policies and rules support the need to uphold these principles.

### *34. How does Queens Park Schools mitigate bullying?*

Queens Park Schools has a zero-tolerance policy towards any form of bullying. We know that students learn best in a safe and calm environment that is free from disruption or embarrassment. We take the following steps to address these matters:

- Students, staff and parents are required to accept the rules of engagement set out by the institution. These rules set clear responsibility, boundaries and expectations for all parties. These rules outline the procedures that are followed where instances of bullying are reported as well as the sanctions imposed if the rules are found to have been breached.
- Key staff members that engage with students during the learning journey complete intensive training that ensures they are fully equipped to offer all possible support when a student is in need.
- Dialogue regarding the issue of bullying is an ongoing part of our learning community in an effort to further educate each school member, and strengthen their advocacy for inclusion and acceptance.
- Engagements between individuals in the school are all held to this system and are monitored.
- Where members of the learning community encounter engagements that are not appropriate, they are able to report the exact circumstance of that engagement, immediately.
- Queens Park Schools is committed to working with a wider community of social services and local authorities to create safe and welcoming learning environment for all.

## 6.0 Frequently Asked Questions

### *35. How do I engage teachers and management?*

We encourage students and parents to direct any questions directly to the learner's dedicated Mentor. Students will also have access to their Tutors regarding academic queries, as well as, live tutor-led sessions every week. If the matter requires escalation, then the Mentor may refer the parent or student to contact either the Chief Academic Officer or the Registrar.

### *36. Does the school provide food for the pupils and/or is there a tuck shop?*

No. Children should bring their own lunch. However, we do have a school canteen which sells recommended food for the learners. [Click here for the school menu.](#)

We also provide learners with micro oven to warm up their food. However, we recommend learners not to pack pork if they intend to use the school micro oven to be considerate of students' dietary restrictions.

### *37. Does the school provide filtered water?*

No. Learners drink tap water directly from the tap or from the water dispensers which are strategically located around the school's premises. They should also bring their own water bottles.

### *38. Does the school have sports facilities?*

Yes. We offer year round swimming lessons in the neighbourhood of the school and Roodepoort Sports Centre for soccer and netball.

### *39. What types of sports activities do you offer at Queens Park Schools?*

We offer Swimming, Soccer, Netball, Chess, Creative Arts, Hockey and Ballet Dance. Please note parents will be expected to pay for swimming, ballet and other sports that might require some costs. Refer to the school calendar for our sports activities. Our extra-mural programme is up and running throughout the year. Please encourage your children to choose one activity each afternoon. It encourages sportsmanship, friendship, positive competition, co-operation and keeps them out of other unsupervised activities.

### *40. Is there any planned expansion or development of Queens Park Schools?*

Yes. Queens Park Schools has taken over the nearby properties which are strictly for development. New classroom blocks will be erected including a swimming pool. [Click here for the computerized artistic plan for the future developments.](#)

### *41. Does the school have a Board of Governors?*

No. Management and direction of the school is in the hands of the owners and the staff, all of whom will be available at various times to discuss the children's needs.

### *42. Can I use the QPS's chartered accountant to swear Affidavits and make cerertificopies as a Commissioner of Oaths rather than having to go to a police station?*

Yes. They will make (and certify) a reasonable number of copies at no charge.



# Gallery

